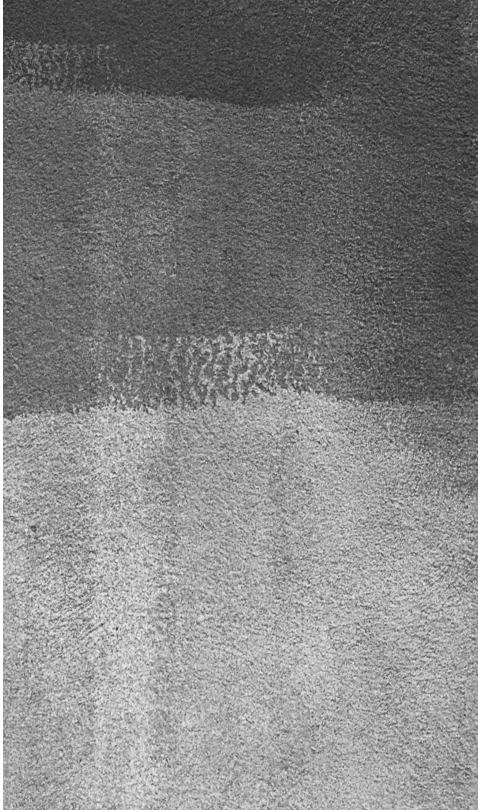




WORLD

USA
PRODUCT CATALOGUE NO. 35 2021



ANY QUESTIONS? WRITE TO US

3500 South Dupont Highway,
Dover, DE 19901

Find us on Facebook:

facebook.com/
FMWORLDUSAofficial

E-mail:

info@usa.fmworld.com

<https://usa.fmworld.com>

CONTENTS

PURE ROYAL		4-13
PURE		14-27
UTIQUE		28-39



A romantic couple is shown in a close embrace. The woman, on the left, has long, wavy brown hair and is wearing a shimmering, gold, off-the-shoulder dress. She has red lipstick and is looking down. The man, on the right, has short brown hair and a beard, and is wearing a dark purple shirt. He is looking down at the woman. The background is a dark, textured surface covered in fine, sparkling gold particles, creating a magical, starry effect. The overall mood is intimate and elegant.

FEDERICO MAHORA

PURE
H O M E

Pure Royal

Welcome to the magical world of Pure Royal fragrances.
On the following pages you will find all your favorite fragrances
from this line. Immerse yourself in the world of your favorite
perfumes and find a product that suits you. We are constantly
changing for the better – for you....

FLORAL

SENSUAL
AND ROMANTIC

This is the most comprehensive family of fragrances. Floral compositions create fresh, ethereal and delicate bouquets. You can go ahead and experiment with scents and change them depending on the occasion. The romantic character of these perfumes was created to emphasise sensuality.

FOUGERE

SEDUCTIVE
AND CLASSIC

An exceptionally intriguing family of fragrances, dominated by forest, grass and herbal accords. Its name comes from French and means fern. Designed for those who appreciate the classics and value traditional beauty canons. Compositions, which represent professionalism and emphasise the style of a mature man.

CITRUS

JOYFUL
AND ENERGETIC

Juicy fruits form an extremely refreshing citrus group provide a refreshing sensation and an amazing boost of energy. They emphasise your temperament, sociable and cheerful nature, and put you in a good mood. Perfect for people who enjoy life to the fullest.

ORIENTAL

STRONG
AND UNTAMED

Fragrances associated with Far East countries, reminiscent of exotic trips, mysterious places and intriguing situations. These are compositions with warm and exotic tones. Both sweet and smoky notes appear in them. They are perfect for autumn and winter days and special occasions.

CHYPRE

SENSUAL
AND TEMPTING

This family is dominated by bold, strong and chic compositions. They evoke the smell of silk scarves and elegant gloves. Woody and herbal-earth notes pulsating in perfumes give them a clear and fresh aroma that attracts attention and adds confidence. Suitable for people with a strong character; intriguing and sensual.

WOODY

SOPHISTICATED
AND CLASSY

Warm and deep notes combined with refined accords create an elegant and sophisticated group of fragrances. Many of them were used to create perfume in ancient times. They stand out with a resin, forest aroma. These moody, mysterious and noble compositions add faith to your abilities.

FLORAL

sensual and romantic

WITH A CHYPRE NOTE

PURE ROYAL 908
170908 |
Type:
elegant, fresh as a garden in the morning

Fragrance notes:
Head: bergamot, coriander, plum
Heart: jasmine, rose, peony, suede
Base: patchouli, ambrette seeds, moss, amber

WITH AN ORIENTAL NOTE

PURE ROYAL 909
170909 |
Type:
fresh, with an edgy element

Fragrance notes:
Head: bergamot, mandarin, honey, rum
Heart: orchid, magnolia, jasmine, rose, orange blossom, heliotrope
Base: sandalwood, citrus, myrrh, Peru balsam, leather, vanilla

PURE ROYAL 915
170915 |
Type:
juicy, sweet, airy
Fragrance notes:
Head: hyacinth, clove
Heart: lily of the valley, jasmine, wild rose
Base: white amber, musk

WITH A CITRUS NOTE

PURE ROYAL 927
170921 |
Type:
dazzling, energising
Fragrance notes:
Head: mandarin, calamondin, orange
Heart: hibiscus, lotus flower, orange flower, jasmine
Base: vanilla, cistus, cedar wood, honey

CITRUS

joyful and energetic

WITH A FRUITY NOTE

PURE ROYAL 903
170903 |
Type:
energising, positive
Fragrance notes:
Head: mandarin, bergamot, lemon, petitgrain, rosemary
Heart: neroli, orange blossom, jasmine
Base: cedarwood, musk, peach

WITH A LIME NOTE

PURE ROYAL 911
170911 |
Type:
positive, captivating with a hint of lime
Fragrance notes:
Head: grapefruit, bergamot, lime, basil, lemon
Heart: thyme, lilac, jasmine, iris
Base: vetiver, patchouli, cedarwood, labdanum, musk

WITH A FLORAL NOTE

PURE ROYAL 914
170914 |
Type:
refreshing, sparkling, sweet
Fragrance notes:
Head: bergamot, green notes, salty notes
Heart: sage, fruity notes, floral notes
Base: woody notes, amber, musk

WITH AN ORANGE NOTE

PURE ROYAL 917
170917 |
Type:
serious with a radiant accent
Fragrance notes:
Head: orange, mandarin, sage
Heart: jasmine, orange flower
Base: honey, sunny notes

ORIENTAL

strong and untamed

WITH A WOODY NOTE

PURE ROYAL 905
170905 |
Type:
balancing between the sacred and the profane
Fragrance notes:
Head: plum, raspberry, rhubarb, pomegranate, clove
Heart: pink pepper, jasmine, opoponax, patchouli, lily
Base: guaiac wood, cedarwood, amberwood, incense, vanilla

WITH A SPICY NOTE

PURE ROYAL 906
170906 |
Type:
passionate, sensual
Fragrance notes:
Head: bergamot, nectarine, ginger
Heart: jasmine, carnation, cinnamon leaves, rosemary, heliotrope
Base: vanilla, tonka bean, cedarwood, tobacco, patchouli

WITH A FLORAL NOTE

PURE ROYAL 913
170913 |
Type:
warm, sweet, inviting
Fragrance notes:
Head: pink pepper, bergamot, orange, pistachio
Heart: coconut, ylang-ylang, jasmine, tuberose
Base: benzoin resin, tonka bean, vanilla, amber

PURE ROYAL 920
170920 |
Type:
untamed, surprising
Fragrance notes:
Head: pink pepper, incense, rose
Heart: leather, red fruit, saffron
Base: peach, oud, amber

CHYPRE

sensual and tempting

WITH A FLORAL NOTE

PURE ROYAL 912
170912 |
Type:
urban, modern, combative
Fragrance notes:
Head: bergamot, lemon, pepper, petitgrain
Heart: neroli, orange blossom, basil
Base: musk, vetiver

WITH A FRUITY NOTE

PURE ROYAL 916
170916 |
Type:
mysterious, intriguing
Fragrance notes:
Head: bergamot, basil, mint
Heart: freesia, pear, rose
Base: musk, patchouli, sandalwood

WOODY

sophisticated and classy

WITH A FRUITY NOTE

PURE ROYAL 900
170900 |
Type:
fascinating, unique, charming cherry scent
Fragrance notes:
Head: black cherry, cherry liqueur, bitter almonds
Heart: rose, jasmine, sour cherry
Base: tonka bean, sandalwood, vetiver, cedarwood

WITH A GOURMAND NOTE

PURE ROYAL 910
170910 |
Type:
dry, scented with a hint of sweetness
Fragrance notes:
Head: jasmine, saffron
Heart: balsam fir, cedarwood
Base: cashmere wood, ambergris, moss, brown sugar



PURE ROYAL
Perfume

50 ml | Fragrance: 20%

\$ **35,70**
\$ 714,00 / 1 l
Catalog prices, don't include State Taxes

FLORAL

sensual and romantic

WITH A FRUITY NOTE

PURE ROYAL 322
170322 |

Type:
serene, sensual

Fragrance notes:
Head: quince, grapefruit
Heart: jasmine, hyacinth
Base: white musk, cedarwood

PURE ROYAL 800
170800 |

Type:
feminine, joyful, sunny, full of positive energy

Fragrance notes:
Head: mandarin, grapefruit, blackcurrant
Heart: jasmine, tuberose, ylang-ylang
Base: rose, sandalwood, musk

PURE ROYAL 807
170807 |

Type:
romantic, light, fresh

Fragrance notes:
Head: bergamot, neroli, petitgrain
Heart: wild peach, lily of the valley, jasmine
Base: cedarwood, musk

PURE ROYAL 817
170817 |

Type:
joyful, subtle, full of brilliance

Fragrance notes:
Head: raspberry, lemon
Heart: rose, neroli
Base: musk, vanilla, patchouli

PURE ROYAL 827
170827 |

Type:
joyful, full of energy, sunny

Fragrance notes:
Head: peach, lemon, apple blossom, juicy pear, violet leaves
Heart: jasmine, freesia, hibiscus, green leaves
Base: musk, cedarwood, sandalwood

PURE ROYAL 833
170833 |

Type:
powdery, magnificent, feminine

Fragrance notes:
Head: peach, orange, honeysuckle
Heart: tuberose, jasmine, iris
Base: sandalwood, cedarwood, vanilla, musk

PURE ROYAL 835
170835 |

Type:
sweet, but edgy, feisty

Fragrance notes:
Head: apple, pear, bergamot, lemon, peach
Heart: lily of the valley, jasmine, rose, iris
Base: cedarwood, patchouli, vanilla, ambergris, musk

WITH AN ORIENTAL NOTE

PURE ROYAL 147
170147 |

Type:
tasteful, alluring

Fragrance notes:
Head: lychee, mandarin, peach
Heart: plum, lily of the valley, lily
Base: vanilla, ambergris, musk, suede

PURE ROYAL 317
170317 |

Type:
seductive, sensual

Fragrance notes:
Head: red berries, pink pepper
Heart: raspberry, peach, violet, lilac
Base: patchouli, ambergris

WITH A WATER NOTE

PURE ROYAL 707
170707 |

Type:
full of energy, evoking the memory of summer

Fragrance notes:
Head: bergamot, lemon, orange, mandarin, leafy notes
Heart: lily of the valley, jasmine, water notes
Base: patchouli, peach, ambergris

WITH A CITRUS NOTE

PURE ROYAL 298
170298 |

Type:
full of energy, fresh

Fragrance notes:
Head: citrus fruits, peony
Heart: rose, Osmanthus
Base: patchouli, sandalwood

WITH A WOODY NOTE

PURE ROYAL 365
170365 |

Type:
classic with a note of Baroque splendour

Fragrance notes:
Head: grapefruit, bergamot
Heart: rose, daffodil, jasmine, geranium, patchouli
Base: sandalwood, vanilla, white musk, tonka bean

ORIENTAL

strong and untamed

WITH A FLORAL NOTE

PURE ROYAL 171
170171 |

Type:
expressive, intense, captivating

Fragrance notes:
Head: pineapple, nectarine, juicy pear
Heart: pink peony, freesia, frangipani
Base: musk, sandalwood, patchouli, tonka bean, vanilla

PURE ROYAL 809
170809 |

Type:
sophisticated and tasteful

Fragrance notes:
Head: bergamot, ginger, water notes
Heart: incense, rose, patchouli
Base: musk, vanilla, vetiver

PURE ROYAL 820
170820 |

Type:
sensual, provocative, magnetic

Fragrance notes:
Head: orange blossom, peach
Heart: ylang-ylang, rose
Base: sandalwood, ambergris, vanilla, musk

WITH A WOODY NOTE

PURE ROYAL 142
170142 |

Type:
provocative, addictive

Fragrance notes:
Head: blackberry, mandarin leaves
Heart: rose, tuberose, orange blossom
Base: sandalwood, tonka bean, vanilla

PURE ROYAL 162
170162 |

Type:
classical, slightly sweet

Fragrance notes:
Head: floral honey
Heart: rose, vanilla
Base: musk, patchouli

PURE ROYAL 359
170359 |

Type:
magnetic, intense

Fragrance notes:
Head: jasmine, heliotrope
Heart: iris root, cashmere wood
Base: ambergris, vanilla

WITH A SPICY NOTE

PURE ROYAL 366
170366 |

Type:
rebellious, urban, sexy, edgy

Fragrance notes:
Head: pink pepper, orange blossom, pear
Heart: coffee, jasmine
Base: vanilla, patchouli, cedarwood

CHYPRE

sensual and tempting

WITH A FRUITY NOTE

PURE ROYAL 362
170362 |

Type:
overwhelming, seductive

Fragrance notes:
Head: blackcurrant leaf
Heart: rose, freesia
Base: patchouli, vanilla, ambroxan, woody notes

PURE ROYAL 811
170811 |

Type:
fresh, frivolous, comfortable

Fragrance notes:
Head: bergamot, pear, raspberry
Heart: jasmine, orange blossom, rose
Base: amber, patchouli, musk

PURE ROYAL 829
170829 |

Type:
stylish, adds self-confidence

Fragrance notes:
Head: mandarin, lemon, nectarine
Heart: pepper, freesia, peony
Base: caramel, musk, vanilla, sandalwood

PURE ROYAL 803
170803 |

Type:
sensual, seductive, scandalous

Fragrance notes:
Head: orange, honey, wild peach
Heart: gardenia, orange blossom, iris
Base: patchouli, vanilla, amber



PURE ROYAL
Perfume

50 ml | Fragrance: 20%

\$ 35,70

\$ 714,00 / 1 l

Catalog prices, don't include State Taxes

ORIENTAL

strong and untamed

WITH A SPICY NOTE

PURE ROYAL 199
170199 |

Type:
rich, multi-dimensional

Fragrance notes:
Head: Italian mandarin, peppermint
Heart: cinnamon, Turkish rose, cardamom
Base: leather notes

WITH A WOODY NOTE

PURE ROYAL 301
170301 |

Type:
energetic, powerful

Fragrance notes:
Head: mandarin, lemon
Heart: cedarwood, coriander
Base: ambergris, labdanum

PURE ROYAL 335
170335 |

Type:
distinct, modern

Fragrance notes:
Head: rosewood, cardamom, pepper
Heart: vetiver, oud
Base: vanilla, ambergris

PURE ROYAL 821
170821 |

Type:
energising, charismatic, seductive

Fragrance notes:
Head: grapefruit, plum, driftwood
Heart: hazelnut, cedarwood, white honey
Base: patchouli, moss, dry wood

PURE ROYAL 837
170837 |

Type:
cheeky, extraordinary, surprising

Fragrance notes:
Head: bergamot, black pepper, white pepper
Heart: cedarwood, sage
Base: tonka bean, amberwood, cocoa

WITH AN AMBERGRIS NOTE

PURE ROYAL 823
170823 |

Type:
decadent, luxurious, controversial

Fragrance notes:
Head: wild lavender, clary sage
Heart: vanilla blossom, iris, almond
Base: cashmere musk, tonka bean, leather, ambergris

WITH A GOURMAND NOTE

PURE ROYAL 839
170839 |

Type:
sensual, powerful, full of love

Fragrance notes:
Head: cardamom, pink pepper, mint, sage
Heart: violet, leaves, orange blossom, lavender, pineapple
Base: vanilla, cedarwood, amber, guaiac wood

WOODY

sophisticated and classy

WITH A FRUITY NOTE

PURE ROYAL 195
170195 |

Type:
noble, classic

Fragrance notes:
Head: coriander, basil
Heart: cardamom
Base: cedarwood, ambergris, tobacco

PURE ROYAL 327
170327 |

Type:
untamed, powerful

Fragrance notes:
Head: grapefruit, pink pepper
Heart: nutmeg, ginger, jasmine
Base: vetiver, patchouli, labdanum

PURE ROYAL 334
170334 |

Type:
refreshing, with a hint of spice

Fragrance notes:
Head: grapefruit, orange
Heart: geranium leaves, black pepper, pink pepper
Base: cedarwood, vetiver, patchouli

FOUGERE

seductive and classic

WITH A LAVENDER NOTE

PURE ROYAL 831
170831 |

Type:
transparent, fresh, mild

Fragrance notes:
Head: bergamot, mandarin, green notes
Heart: lavender, rhubarb, apple blossom
Base: sandalwood, oakmoss, cedarwood, musk



PURE ROYAL
Perfume

50 ml | Fragrance: 20%

\$ 35,70

\$ 714,00 / 1 l

Catalog prices, don't include State Taxes

A woman with long, dark, wavy hair is captured in a dynamic pose, dancing or twirling. She is wearing a long, flowing white dress with long sleeves and a high collar. Her head is tilted back, and her eyes are closed, conveying a sense of joy and freedom. The setting is a room with a rustic brick wall on the left and large windows on the right. Sunlight streams in from the windows, creating a warm, golden glow and casting long shadows on the floor. The overall mood is ethereal and artistic.

FEDERICO MAHORA

PURE
H O M E

Pure

It is the second world of FM WORLD that welcomes you with subtle fragrances and the possibility of being transferred to another world. Feel free with the fragrances that you have known for so long and are so dear to you. Taste your favorite fragrances in unique products...

FLORAL

sensual and romantic

WITH A FRUITY NOTE

PURE 10
100010 |
Type:
warm, sweet
Fragrance notes:
Head: mandarin, ivy leaves, champaca flowers
Heart: jasmine, African orchid, rose
Base: amaranth wood, blackberry, musk

PURE 17
100017 |
Type:
stimulating, friendly
Fragrance notes:
Head: melon, peach, apple
Heart: freesia, lily, mimosa, tuberose, jasmine
Base: cedarwood, ylang-ylang, musk

PURE 25
100025 |
Type:
harmonious, slightly brash
Fragrance notes:
Head: green apple, water accents
Heart: jasmine, freesia, iris, passiflora
Base: sandalwood, cedarwood, vanilla

PURE 180
100180 |
Type:
seductive, changeable
Fragrance notes:
Head: lychee, raspberry, rose
Heart: freesia, lily of the valley, cedarwood
Base: vanilla, ambergris, vetiver

PURE 420
100420 |
Type:
seductively sweet, tempting
Fragrance notes:
Head: red fruits, mandarin
Heart: lily of the valley, peony
Base: praline, amber, musk, caramel

PURE 427
100427 |
Type:
joyful, captivating
Fragrance notes:
Head: raspberry, bergamot
Heart: rose, iris, violet
Base: patchouli

PURE 437
100437 |
Type:
seductive, full of sweetness
Fragrance notes:
Head: bergamot, strawberry, fresh flowers
Heart: peach, Osmanthus, raspberry macaroons
Base: cocoa, amber, vanilla

PURE 438
100438 |
Type:
sweet, feminine, subtle
Fragrance notes:
Head: apple flower, nectarine, pear
Heart: jasmine, peony, heliotrope
Base: brown sugar, olibanum, vanilla, musk

PURE 447
100447 |
Type:
expressive, charming, serene
Fragrance notes:
Head: exotic fruits, red fruits, bergamot, yellow plum, pink berries
Heart: lily of the valley, freesia, rose, jasmine, peach
Base: patchouli, moss, musk, amberwood, sandalwood

PURE 449
100449 |
Type:
multi-dimensional, thrilling, full of charm
Fragrance notes:
Head: lemon, mandarin, pear, bergamot, liquorice, rhubarb, peach, pineapple, coconut, plum, grapefruit, cardamom
Heart: jasmine sambac, rose, lily of the valley, orange tree, sunny notes, violet, geranium, wine lees
Base: vanilla, gourmand, patchouli, musk, sandalwood, cedarwood, dry wood

PURE 486
100486 |
Type:
sweet, girly, appetising
Fragrance notes:
Head: pink pepper, raspberry, bergamot
Heart: peony, rose, lily of the valley, iris
Base: sandalwood, patchouli, cedarwood, musk

PURE 716
100716 |
Type:
sweet, charming, carefree
Fragrance notes:
Head: mandarin, lemon, blackberry, blackcurrant
Heart: jasmine, magnolia, water notes
Base: musk, cedar wood, sandalwood

WITH A CHYPRE NOTE

PURE 485
100485 |
Type:
surprising, ambiguous
Fragrance notes:
Head: lemon, blackcurrent, cranberry leaves
Heart: rose, orange blossom, jasmine, peach
Base: patchouli, cedarwood, amber, vanilla, tonka bean, oakmoss, musk

PURE 706
100706 |
Type:
soft, powdery, romantic
Fragrance notes:
Head: bergamot, violet leaves, coriander
Heart: peach, water lily, rose, violet, narcissus
Base: vetiver, cedarwood, sandalwood, musk

WITH A GREEN NOTE

PURE 81
100081 |
Type:
eccentric but subtle
Fragrance notes:
Head: green apple, cucumber, magnolia
Heart: lily of the valley, rose, violet
Base: sandalwood, ambergris

WITH A WOODY NOTE

PURE 414
100414 |
Type:
independent, very feminine
Fragrance notes:
Head: cactus
Heart: pink freesia, jasmine, rose
Base: cedarwood, woody notes

PURE 445
100445 |
Type:
joyful, vibrating, juicy
Fragrance notes:
Head: mandarin, bergamot, nectarine
Heart: rose, jasmine, honeysuckle, water lily
Base: sandalwood, patchouli, cedarwood, vanilla, musk

WITH A WATER NOTE

PURE 07
100007 |
Type:
balanced, mild
Fragrance notes:
Head: pineapple, peony, sweet pea
Heart: freesia, jasmine, lily
Base: sandalwood, cedarwood, musk

PURE 488
100488 |
Type:
delicate, radiant, elegant
Fragrance notes:
Head: grapefruit, bergamot, lychee, water notes
Heart: rose, jasmine, magnolia, clove
Base: sandalwood, ambergris, oakmoss, cedarwood, musk

WITH AN ALDEHYDE NOTE

PURE 21
100021 |
Type:
classic, warm, enveloping
Fragrance notes:
Head: aldehyde, ylang-ylang, orange blossom
Heart: rose, lily of the valley, iris
Base: civet, oakmoss, sandalwood

WITH AN ORIENTAL NOTE

PURE 20
100020 |
Type:
seductive, sensual
Fragrance notes:
Head: Osmanthus, black tea, bergamot
Heart: rose, freesia, magnolia, orchid
Base: musk, patchouli

PURE 132
100132 |
Type:
exclusive, intense
Fragrance notes:
Head: ginger, cardamom, pepper, orange
Heart: tuberose, coconut, gardenia, peony
Base: ambergris, musk

PURE 183
100183 |
Type:
sharp, strong
Fragrance notes:
Head: cranberry, pink pepper, tamarind
Heart: black violet, cocoa, rose, hellebore
Base: patchouli, vanilla, Massoia wood

PURE 239
100239 |
Type:
vibrating, intense
Fragrance notes:
Head: cardamom, pink pepper, mandarin
Heart: iris, campanula, Ceylon
Base: cedarwood, vetiver, musk

PURE 434
100434 |
Type:
audacious, addictive
Fragrance notes:
Head: orange, grapefruit, liquorice
Heart: rose, orange blossom, lily of the valley, iris
Base: sandalwood, vanilla, musk

PURE 444
100444 |
Type:
tempting, surprising, warm
Fragrance notes:
Head: bergamot, pear, sweet orange
Heart: rose, iris, violet, ylang-ylang
Base: vanilla, musk, patchouli, coffee



PURE
Perfume

50 ml | Fragrance: 20%

\$ 21,50

\$ 430,00 / 1 l

Catalog prices, don't include State Taxes

PURE 446
100446 |
Type:
rebellious, sensual
Fragrance notes:
Head: bergamot, apple, hyacinth, petitgrain
Heart: orange blossom, jasmine, tuberose, rose
Base: cedarwood, vanilla, musk, cashmere wood, dry amber, heliotrope

PURE 489
100489 |
Type:
futuristic, eccentric
Fragrance notes:
Head: green leaves, anise, blackcurrent
Heart: orange blossom, water notes, lily of the valley, cashmere wood
Base: cedarwood, patchouli, tonka bean, ambergris

ORIENTAL

strong and untamed

WITH A FLORAL NOTE

PURE 101
100101 |
Type:
sophisticated, unforgettable
Fragrance notes:
Head: orange blossom, pear
Heart: ginger, incense
Base: sandalwood, vanilla, honey, musk

PURE 431
100431 |
Type:
cheeky, sensual, alluring
Fragrance notes:
Head: bergamot, apple
Heart: jasmine, lily of the valley
Base: tonka bean, musk

PURE 436
100436 |
Type:
charming, rebellious
Fragrance notes:
Head: coconut, hazelnut, lily of the valley
Heart: orange blossom, rose
Base: cashmere wood, vanilla, amber

PURE 440
100440 |
Type:
exquisite, sensual
Fragrance notes:
Head: blackcurrant, hazelnut, peach, rhubarb
Heart: iris, orange blossom, caramel, coconut
Base: vanilla, patchouli, musk

PURE 442
100442 |
Type:
warm, spicy, intriguing
Fragrance notes:
Head: rose, orange flower, pear
Heart: coffee, jasmine, peach
Base: vanilla, patchouli, cedarwood

WITH A WOODY NOTE

PURE 448
100448 |
Type:
surprising, seductive, with a hint of sweetness
Fragrance notes:
Head: rose petals, saffron blossom, white woods
Heart: jasmine sambac, plum, vanilla planifolia
Base: vetiver, amber, musk

WITH A SPICY NOTE

PURE 173
100173 |
Type:
dreamlike, dimmed
Fragrance notes:
Head: anise, liquorice
Heart: Jacaranda wood, bitter almond
Base: sandalwood, musk, moss

WITH A FRUITY NOTE

PURE 32
100032 |
Type:
fascinating, ambiguous
Fragrance notes:
Head: melon, coconut, mandarin, candy floss
Heart: blackberry, mango, plum, honey
Base: vanilla, chocolate, toffee

PURE 237
100237 |
Type:
provocative, flirty
Fragrance notes:
Head: exotic fruits, blackcurrant
Heart: peony, jasmine, plum
Base: vanilla, musk, ambergris

PURE 413
100413 |
Type:
very sweet, slightly flirtatious
Fragrance notes:
Head: blackcurrant, pear
Heart: iris, jasmine, orange blossom
Base: chocolate pralines, patchouli, vanilla

PURE 426
100426 |
Type:
bold, addictive
Fragrance notes:
Head: bergamot, neroli
Heart: orange blossom, raspberry, jasmine
Base: patchouli, vanilla, cashmere wood

CITRUS

joyful and energetic

WITH A FRUITY NOTE

PURE 419
100419 |
Type:
optimistic, casual
Fragrance notes:
Head: citrus fruits, grapefruit, bergamot, water notes, calone, melon, peach
Heart: woody notes, jasmine, lily of the valley
Base: musk, ambergris

WITH A LEMON NOTE

PURE 33
100033 |
Type:
refreshing, joyful
Fragrance notes:
Head: mango, Sicilian lemon, apple
Heart: jasmine, bamboo, white rose
Base: cedarwood, ambergris

WITH AN ORIENTAL NOTE

PURE 484
100484 |
Type:
bright and impressive at the same time
Fragrance notes:
Head: mandarin, orange, nutmeg, clove
Heart: orange blossom, jasmine, tuberose, lavender
Base: vanilla, labdanum, patchouli, sandalwood

CHYPRE

sensual and tempting

WITH A FLORAL NOTE

PURE 432
100432 |
Type:
chic, full of charm
Fragrance notes:
Head: mandarin, bergamot, green notes
Heart: rose, jasmine
Base: woody notes, musk

WITH A WOODY NOTE

PURE 18
100018 |
Type:
radiant, alluring
Fragrance notes:
Head: orange, orange blossom
Heart: rose, jasmine, ylang-ylang
Base: white musk, vetiver, tonka bean, vanilla

WITH A FRUITY NOTE

PURE 05
100005 |
Type:
intriguing, modern
Fragrance notes:
Head: freesia, gardenia
Heart: sandalwood, rose, coriander
Base: vanilla, vetiver, patchouli

PURE 16
100016 |
Type:
fabulous, fascinating
Fragrance notes:
Head: mandarin, pear, green notes
Heart: orchid
Base: patchouli, toffee

PURE 34
100034 |
Type:
free, joyful
Fragrance notes:
Head: iris, pineapple, hyacinth, pink pepper
Heart: jasmine, lemon
Base: vanilla, vetiver, musk

PURE 80
100080 |
Type:
surprising, appetising
Fragrance notes:
Head: strawberry sorbet, cherry, pineapple
Heart: caramel popcorn, violet, rose
Base: musk, ambergris, patchouli

PURE 372
100372 |
Type:
elegant, classic, balanced
Fragrance notes:
Head: patchouli, green apple, bergamot, lemon, pink pepper
Heart: sandalwood, rose, musk
Base: peach, blackcurrant, lily, ylang-ylang, amber

WOODY

sophisticated and classy

WITH A FLORAL NOTE

PURE 241
100241 |
Type:
seductive, comfortable, full of charm
Fragrance notes:
Head: bergamot
Heart: ylang-ylang, Casablanca lily, orange blossom
Base: sandalwood, amber resin, vanilla



PURE Perfume

50 ml | Fragrance: 20%

\$ **21,50**

\$ 430,00 / 1 l

Catalog prices, don't include State Taxes



PURE
Perfume

50 ml | Fragrance: 20%

\$ 21,50

\$ 430,00 / 1 l

Catalog prices, don't include State Taxes



ORIENTAL

strong and untamed

WITH A SPICY NOTE

PURE 224
100224 |

Type:
sweet, seductive

Fragrance notes:
Head: bergamot, grapefruit, grass
Heart: saffron, violet, nutmeg, jasmine
Base: cane sugar, vanilla, ambergris

PURE 466
100466 |

Type:
sexy, intriguing, smoky

Fragrance notes:
Head: bergamot, basil, lavender, orange, lemon
Heart: apple blossom, heliotrope, water notes, watermelon, clove
Base: musk, cedarwood, tonka bean, sandalwood, guaiac wood

PURE 719
100719 |

Type:
transparent, surprising

Fragrance notes:
Head: cypress, cardamom
Heart: cashmere, sage
Base: neroli, leather, patchouli

WITH A FLORAL NOTE

PURE 52
100052 |

Type:
thrilling, spirited

Fragrance notes:
Head: apple, bergamot, mint
Heart: jasmine, geranium, lavender
Base: cinnamon, clove, musk

PURE 465
100465 |

Type:
suggestive, aromatic

Fragrance notes:
Head: cardamom, bergamot, lemon, mint, orange
Heart: sage, lavender, orange blossom, tonka bean, petitgrain
Base: sandalwood, vanilla, ambergris, musk

WITH AN AMBERGRIS NOTE

PURE 64
100064 |

Type:
tasteful, sensual

Fragrance notes:
Head: mandarin, cedarwood, anise
Heart: rosemary, olive tree flowers
Base: musk, guaiacum, tonka bean

WITH A WOODY NOTE

PURE 471
100471 |

Type:
mysterious, extravagant

Fragrance notes:
Head: mandarin, orange
Heart: cinnamon, tobacco, clove
Base: patchouli, tonka bean, myrrh

PURE 475
100475 |

Type:
warm, attractive

Fragrance notes:
Head: bergamot, mandarin, lemon, cardamom
Heart: lavender, jasmine, cyclamen
Base: cedarwood, musk, patchouli, tonka bean

CITRUS

joyful and energetic

WITH A MANDARIN NOTE

PURE 134
100134 |

Type:
refreshing, captivating

Fragrance notes:
Head: bitter orange, lemon, bergamot
Heart: rosemary, seagrass, violet
Base: patchouli, cedarwood, ambergris

PURE 452
100452 |

Type:
very refreshing, twinkling

Fragrance notes:
Head: aldehyde, mint, citrus fruits, water notes
Heart: neroli, cedarwood, pepper, cypress
Base: tonka bean, vanilla, vetiver

WITH AN ORIENTAL NOTE

PURE 721
100721 |

Type:
transparent, positive, combative

Fragrance notes:
Head: mandarin, melon, orange, lemon, lavender, sage, green apple
Heart: coriander, jasmine, freesia, cardamom, cinnamon, pepper
Base: tonka bean, cedar wood, amber, musk, cistus

WOODY

sophisticated and classy

WITH A FRUITY NOTE

PURE 55
100055 |

Type:
light and elegant

Fragrance notes:
Head: coriander, apple
Heart: incense, Sichuan pepper
Base: vanilla, woody notes

PURE 472
100472 |

Type:
expressive, luxurious

Fragrance notes:
Head: bergamot, blackcurrant, lime
Heart: apple, pineapple, rosemary, elemi resin
Base: musk, patchouli, cedarwood

WITH A WATER NOTE

PURE 457
100457 |

Type:
fresh, minimalist

Fragrance notes:
Head: grapefruit, mandarin, water notes
Heart: jasmine, bay leaf
Base: ambergris, patchouli, oakmoss

WITH A GOURMAND NOTE

PURE 720
100720 |

Type:
exceptional, appetising, coquettish

Fragrance notes:
Head: pineapple, mugwort, lavender
Heart: ginger, coconut, pepper, spicy notes
Base: vanilla, moss, cedar wood, dry wood, gourmand notes

CHYPRE

sensual and tempting

WITH A WOODY NOTE

PURE 56
100056 |

Type:
inflaming senses, vibrating

Fragrance notes:
Head: grapefruit, lavender, nutmeg flower, honeysuckle
Heart: raspberry, heliotrope, clove
Base: cedarwood, resin, juniper

WITH AMBERGRIS AND MUSK NOTES

PURE 110
100110 |

Type:
a little brash, rebellious

Fragrance notes:
Head: lavender, bergamot, cardamom
Heart: orange blossom, lily of the valley
Base: musk, ambergris, vanilla

FOUGERE

seductive and classic

WITH A FERN NOTE

PURE 135
100135 |

Type:
surprising, intense

Fragrance notes:
Head: bitter orange, mandarin
Heart: santolina, seagrass
Base: ambergris, woody notes

WITH A LAVENDER NOTE

PURE 54
100054 |

Type:
ambiguous, fresh

Fragrance notes:
Head: mint, bergamot, rum
Heart: cedarwood, sage, lavender
Base: oakmoss, vetiver, suede

PURE 473
100473 |

Type:
fresh, noble, rebellious

Fragrance notes:
Head: bergamot, pink pepper
Heart: amber, lavender
Base: patchouli, vetiver, dry wood

PURE 480
100480 |

Type:
curious, harmonious, mysterious

Fragrance notes:
Head notes: lemon, bergamot, neroli
Heart notes: geranium, hyacinth, lavender, clary sage, marigold
Base notes: cedarwood, tonka bean, ambergris, oakmoss, musk

PURE 483
100483 |

Type:
mature, toned, retro

Fragrance notes:
Head: apple, mandarin, orange, cinnamon, sage
Heart: lavender, patchouli, rosemary
Base: sandalwood, olive tree



PURE Perfume

50 ml | Fragrance: 20%

\$ **21,50**

\$ 430,00 / 1 l

Catalog prices, don't include State Taxes



FOR HER

FLIRT

18120018
 20120020
 431120431

SUCCESS

436120436
 489120489

CHARM

34120034
 413120413

FOR HIM

SEDUCTION

473120473

SUCCESS

64120064
 472120472

SELF-CONFIDENCE

457120457

PHEROMONE
Perfume

50 ml | Fragrance: 20%

\$ 24,30

\$ 486,00 / 1 l

Catalog prices, don't include State Taxes



PHEROMONES

Pheromones are odourless substances added to perfume to reinforce their stimulating effect; they are the secret weapon, with a mission to boost attractiveness and self-confidence.

Travel Perfume
ATOMISER

TRAVEL VIAL

Now, your favourite perfume can always be with you, even if you're travelling with a small amount of luggage. Comfortable and classy. The twist-up atomiser with a glass refill keeps your favourite fragrance safe while travelling. In an elegant matt aluminium container.

HEIGHT: 9,5 cm | 8 ml

\$ XXX

Catalog prices, don't include State Taxes

GOLD | 920045 |

SILVER | 920090 |



TRAVEL PERFUME ATOMISER

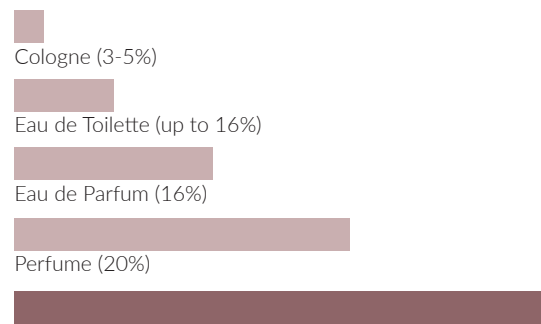


INTENSE Perfume

50 ml

\$ 24,30

\$ 486,00 / 1 l



INTENSE (24-30%)

FOR HER

FRAGRANCE: 30%

FLORAL

sensual and romantic

WITH A FRUITY NOTE

INTENSE 10 | 110010 |
a fragrance that provokes

WITH AN ORIENTAL NOTE

INTENSE 20 | 110020 |
an explosion of passion

INTENSE 489 | 110489 |
a breath of innovation

WITH AN ALDEHYDE NOTE

INTENSE 21 | 110021 |
classic

CITRUS

joyful and energetic

WITH A LEMON NOTE

INTENSE 33 | 110033 |
refreshing and energetic

CHYPRE

sensual and tempting

WITH A FRUITY NOTE

INTENSE 05 | 110005 |
inflames the senses

INTENSE 16 | 110016 |
enticing sweetness

WITH A WOODY NOTE

INTENSE 18 | 110018 |
slight provocation

ORIENTAL

strong and untamed

WITH A FLORAL NOTE

INTENSE 436 | 110436 |
confidence booster

WITH A FRUITY NOTE

INTENSE 413 | 110413 |
liberated

WITH A SPICY NOTE

INTENSE 173 | 110173 |
exotic journey

FOR HIM

FRAGRANCE: 24%

CHYPRE

sensual and tempting

WITH AMBERGRIS AND MUSK NOTES

INTENSE 110 | 110110 |
liberated, manly and brave

FOUGERE

seductive and classic

WITH A LAVENDER NOTE

INTENSE 473 | 110473 |
rebellious soul

ORIENTAL

strong and untamed

WITH A FLORAL NOTE

INTENSE 52 | 110052 |
the definition of a twenty-first century man

WITH AN AMBERGRIS NOTE

INTENSE 64 | 110064 |
the power of elegance

WOODY

sophisticated and classy

WITH A FRUITY NOTE

INTENSE 472 | 110472 |
impresses with its character

WITH A WATER NOTE

INTENSE 457 | 110457 |
stimulates to action



UTIQUE



In the world of luxury

Take a trip to the incredible land of UTIQUE, which offers rich compositions, precious oils and the best recipes. It is where class, sophistication and finesse meet together becoming a sensual sensation. Ideally composed fragrances reflect the beauty, harmony and energy of life. The exclusive range, which is an unforgettable fusion of subtlety and intensity of action. Let yourself be enchanted by the magic of the UTIQUE world.

AMBRE ROYAL Perfume

- Type:**
- Sensual, charming, with a hint of mystery
- Fragrance notes:**
- Head: bergamot, orange, apple, cinnamon
 - Heart: clove, tobacco, cedarwood
 - Base: patchouli, tonka bean, myrrh, musk

100 ml | Fragrance: 20%
UTIQUE 100 | **502008** |

\$ **100,00**
\$ 1000,00 / 1 l

Catalog prices, don't include State Taxes



AMBERGRIS Perfume

- Type:**
- Deep, mysterious, absolute
- Fragrance notes:**
- Head: bergamot, red peppercorn, cumin seeds, cardamom
 - Heart: wild jasmine, lily of the valley, ylang-ylang
 - Base: ambergris, tonka bean, labdanum, leather, oakmoss, patchouli, musk

100 ml | Fragrance: 20%
UTIQUE 100 | **502048** |

\$ **100,00**
\$ 1000,00 / 1 l

Catalog prices, don't include State Taxes



CAPTIVATING LIKE
PRECIOUS JEWELLERY

Ambre Royal is a royal fragrance composition providing a mystic experience. Captivating like precious jewellery and surprising like the first summer rain. See for yourself how it will surprise you with the richness of the fragrance compositions with each developing hour.

SEA ACCORDS SPICED
WITH A PINCH OF
SPICINESS

Drifting on rough ocean waves ambergris captured in the stunning perfume Ambergris, delights with sea accords spiced with a pinch of spiciness. It is like a secret cruise at sunset, which does not end with the arrival of dawn. This is a mysterious story about the unprecedented power of attraction.

FLAMINGO Perfume

Type:

- Charming, seductive like a forbidden fruit

Fragrance notes:

- Head: Rosa Mosqueta, blackberry sorbet, green notes
- Heart: Damask Rose, jasmine, apricot
- Base: woody notes, crystal rose chord, musk

100 ml | Fragrance: 20%
UTIQUE 100 | **502007** |

\$ **100,00**

\$ 1000,00 / 1 l

Catalog prices, don't include State Taxes



BUBBLE Perfume

Type:

- Enchanting, delightful

Fragrance notes:

- Head: bergamot, cardamom, lime
- Heart: lily of the valley, jasmine, mint
- Base: guaiac wood, musk, cedarwood

100 ml | Fragrance: 20%
UTIQUE 100 | **502009** |

\$ **100,00**

\$ 1000,00 / 1 l

Catalog prices, don't include State Taxes



THE FRAGRANCE OF UNDISCOVERED PARADISE

Flamingo is the fragrance of undiscovered paradise. The essence of innocence and class. It is like a wonderful, colourful story. An unforgettable adventure to dive in with all your senses. Mysterious and undeniably glamorous.

THE MOST BEAUTIFUL SUMMER MEMORIES

The breath of elegance and unique freshness locked in a bottle of Bubble perfume brings to mind the most beautiful summer memories. Just close your eyes and spray the fragrance for the incredibly refreshing aura. It will be like with the touch of a magic wand and you will be taken to the times of a carefree life.

MUFFIN

Perfume

- Type:
- Intriguing, noble, unforgettable
- Fragrance notes:
- Head: lemon, rose, saffron
 - Heart: woody notes, peony, amyris, leather notes
 - Base: amber, oud, vanilla

100 ml | Fragrance: 20%
UTIQUE 100 | **502006** |

\$ **100,00**
\$ 1000,00 / 1 l
Catalog prices, don't include State Taxes



SEXY CASHMERE

Perfume

- Type:
- Uninhibited, ambiguous, triggering desires
- Fragrance notes:
- Head: plum
 - Heart: iris, violet, ylang-ylang, cedarwood, patchouli
 - Base: sandalwood, benzoin, vanilla, musk

100 ml | Fragrance: 20%
UTIQUE 100 | **502034** |

\$ **100,00**
\$ 1000,00 / 1 l
Catalog prices, don't include State Taxes



A TEMPTATION YOU
CANNOT RESIST

Muffin is a temptation you cannot resist. Sweetness and sophistication in one. A marriage of extraordinary wealth and taste. Indulge yourself in the colourful world of those intriguing fragrance notes and every moment will change into an unforgettable experience.

AN EXPLOSION
OF DESIRE AND
IRREPRESSIBLE
PASSION

Sexy Cashmere is an explosion of desire and irrepressible passion. At first, it stuns with strong and hypnotising accords, slowly passing into softer and warmer notes enveloping the body like a cashmere scarf. A composition full of contradictions will ignite your imagination, bringing out your deepest desires.

RUBY Perfume

Type:

- Magnetic, attractive, seductive

Fragrance notes:

- Head: cashmere wood, jasmine, cistus
- Heart: vanilla, amberwood, balsamic notes
- Base: white oud, black musk, dry wood

100 ml | Fragrance: 20%
UTIQUE 100 | **502003** |

\$ **100,00**
\$ 1000,00 / 1 l

Catalog prices, don't include State Taxes



VIOLET OUD Perfume

Type:

- Sophisticated, stunning

Fragrance notes:

- Head: rose, suede, safflower
- Heart: frozen raspberry, wild rose, cypriol
- Base: agarwood, white musk, American sweetgum

100 ml | Fragrance: 20%
UTIQUE 100 | **502012** |

\$ **100,00**
\$ 1000,00 / 1 l

Catalog prices, don't include State Taxes



**SEDUCES, ENSLAVES,
STIMULATES DESIRE**

Ruby awakens the senses and wraps the skin like delicate chiffon. Magnetism, passion, the most wonderful emotions locked in a bottle. It seduces, enslaves, stimulates desire. It is an escape from everyday life, the mystical journey into the depths of the human soul.

**MAJESTIC, NOBLE,
UNPREDICTABLE**

Violet Oud has that mystical element to it which is the beginning of the new adventure to the unknown. Majestic, noble, unpredictable. Spray the magic around you and dive into the ravine of unpredictability.

GOLD Perfume

- Type:
- Luxurious, exquisite
- Fragrance notes:
- Head: red pepper, cedarwood, nutmeg
 - Heart: iris, saffron, vetiver
 - Base: cypriol, patchouli, black musk, amber

100 ml | Fragrance: 20%
UTIQUE 100 | **502002** |

\$ **100,00**
\$ 1000,00 / 1 l

Catalog prices, don't include State Taxes



BLACK Perfume

- Type:
- Elegant, sophisticated, mysterious
- Fragrance notes:
- Head: woody notes, saffron, styrax
 - Heart: vetiver, amber, vanilla
 - Base: leather, sandalwood, amberwood

100 ml | Fragrance: 20%
UTIQUE 100 | **502001** |

\$ **100,00**
\$ 1000,00 / 1 l

Catalog prices, don't include State Taxes



THE ESSENCE
OF ORIENTAL
SPLENDOUR

Gold perfume which dazzles like gold and is exquisite like handcrafted jewellery. Majestic, essential, inspiring. The essence of oriental splendour. Spray around the charming mist of sensual sensations.

ADDICTIVE,
CAPTIVATING AND
ENCHANTING

Black gives a unique meaning to every moment. Addictive, captivating and enchanting. It is a perfume with a mysterious dimension where warmth meets sophistication. Wrap yourself with the scent of black elegance.



All prices in the Catalogue exclude State Taxes.. FM WORLD product Catalogue no. 35 is valid from October 2021. Catalogues, the Marketing Plan and other advertising, promotional, and information materials that are issued or explicitly approved by FM WORLD are the only authorised sources of information for the purpose of selling and advertising of FM WORLD. The FM WORLD branded products are genuine products by FM WORLD.

FM WORLD GROUP USA CORP. 3500 SOUTH DUPONT HYW, DOVER, DE 19901